

Yamaha Pitmans South Australian Off Road Championships Rd 1 & 2
being held in Renmark at Riverland Junior MCC, 30th to 31st May 2026

Please read the information below before arriving at the event.

These Final Instructions are to be read in conjunction with the 2026 Manual of Motorcycle Sport, SAORC Championship Regulations and the event Supplementary Regulations.

It is your responsibility to ensure your competition licence is current, free of suspension, and carries the appropriate endorsements.

EVENT OFFICIALS



Series Steward	Scott Richardson	116901	Level 4
Series Clerk of Course	Sean Heidenreich	169511	Level 4
Race Secretary	Sally Stewart	712446	Level 3
Technical Officer	Brett Schiller	205988	Level 3
Timing	Isaac Southern	569889	Level 3
Timing	Daniel Humby	706332	Level 3

STAYING UP TO DATE



To improve communication across the SAORC series, we're introducing Stack Team App, a free, secure platform that centralizes event updates, schedules, and announcements. It will help ensure all riders, teams, and officials stay informed and connected in one place. [Watch the quick starter guide video here](#) to get set up in minutes.

11:00
29 MAY**GATES OPENING FOR PIT ENTRY**

Riverland MGC, Renmark

13:00
29 MAY**TRACK OPEN FOR WALKING, NO PUSHBIKES**

Penalties apply

16:30 TO 18:00
29 MAY**RIDERS SIGN ON (JUNIOR & SENIOR)**

Please ensure you bring your MA licence & Guardian if under 18

6:30 TO 7:30
30 MAY**RIDERS SIGN ON (JUNIOR & SENIOR)**

Please ensure you bring your MA licence & if you are under 18, your Guardian accompanies you to sign on.

7:45
30 MAY**JUNIORS COMPULSORY RIDERS BRIEFING**

Please ensure your Guardian is present

8:00 APPROX.
30 MAY**RACE 1 - JJ, J1 SIGHTING LAP**

Race starts 5 minutes after return of first rider from sighting lap

10:00 APPROX.
30 MAY**RACE 2 - J2, J3, J4 SIGHTING LAP**

Race starts 5 minutes after return of first rider from sighting lap

11:00
30 MAY**SENIORS COMPULSORY RIDERS BRIEFING**

Please ensure if you are under 18, your Guardian is present

12:30 APPROX.
30 MAY**RACE 3 - SENIORS****RD 1 PRESENTATIONS WILL BE HELD ON SUNDAY****X- COUNTRY
DURATION **** Subject to change at
the discretion of the
Clerk of Course**RACE 1 1.5 HOURS****RACE 2 1.5 HOURS****RACE 3 3 HOURS**

** This schedule is subject to change and may be changed in the event of an unexpected incidents or delays.

7:00 TO 7:15
31 MAY**RIDERS SIGN ON (SUNDAY ONLY COMPETITORS)**

OR Competitors wishing to scrutineer a second bike

7:20
31 MAY**COMPULSORY RIDERS BRIEFING (SENIOR & JUNIORS)**

Please ensure if you are under 18, your Guardian is present

7:50
31 MAY**SIGHT LAP - SENIORS & JUNIORS**8:35 APPROX.
31 MAY**RACING COMMENCES**14:30
31 MAY**RACE COMPLETION****PRESENTATIONS**

** This schedule is subject to change and may be changed in the event of an unexpected incidents or delays.

RIDERS SIGN ONRIVERLAND
JUNIOR MOTORCYCLE CLUB

All competitors are required to present a valid and current Motorcycling Australia (MA) Annual Competition Licence. Participants must log in to the MA RiderNet App, available on both Apple and Android devices, to display their digital licence card during sign-on. Alternatively, a physical MA licence card is also acceptable.

RIDERS BRIEFING (COMPLUSORY)RIVERLAND
JUNIOR MOTORCYCLE CLUB

The compulsory riders briefing will be held as detailed in the above schedule and will include important up-to-date information relating to the event. All riders must read the SAORC Round specific riders briefing notes supplied through the Stack Team App or the SAORC website prior to attending. All junior competitors must be accompanied by a parent or guardian.

ELECTRONIC SELF SCRUTINEERING



All bikes are required to undergo electronic self-scrutineering, which must be completed prior to sign-on. The self-scrutineering form will be available online 48 hours before the event. Machines must comply with the MoMS requirements and championship supplementary regulations. Paddle/Sand tyres are permitted to be used during this event. Random machine examinations will take place throughout the weekend by the Technical Officer and their assistants.

Please ensure that your race number is displayed on all three plates and comply with the General Competition Rules (GCR). Failure to meet these standards will result in exclusion from the event. Any other issues identified by the Chief Technical Officer will be reviewed by the Clerk of Course for compliance.

TIMING TAGS & RACE RESULTS



Test times will be recorded by Race Result.

All riders will be given 2 x Timing tags at sign on for each round. Any previously used Race results tags **MUST** be removed.

All riders **MUST** push their bike through the "Tag Check" prior to racing. Failure to correctly apply tags may result in no or missing race times. It is the riders responsibility to ensure tags are applied correctly and tested via the Tag Check prior to racing.

The timing team will make every effort to capture any missed passings. If timing tags are found not fitted to the machine during a missed passing, this may adversely impact your results. Final determinations will be made by the Clerk of Course.

Please note: If you have inquiries related to timing and results during the event, we encourage you to consult with the race secretary. Access to the timing van will not be permitted during the event, as the team needs to maintain full focus for the benefit of all participants. We appreciate your questions and encourage you to submit your query for review.

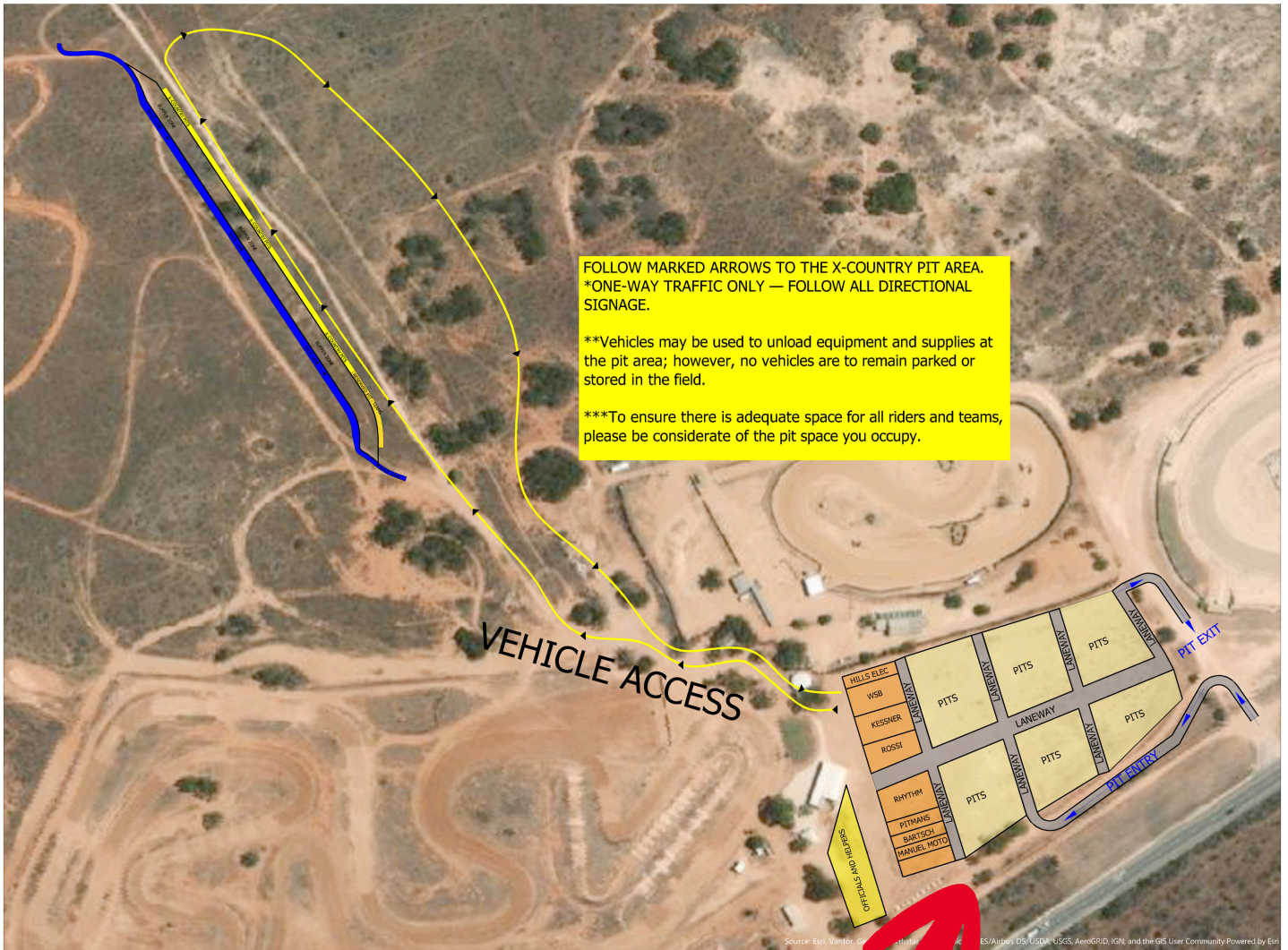
Live Timing will be available throughout the day and can be viewed by following the link located on the SAROC web site - www.saoffroadchampionships.com

TRACK WALK



Track inspections may only be conducted on foot from 1300 Friday. Please be aware that service vehicles may be present during this period.





The course consists of open flowing sandy tracks with some scrub and some rocky terrain. All competitors are to follow the marked course which is identified by arrows and bunting.

The length of each lap is approximately:

	Class	X-Country	Sprint
Junior Test	JJ & J1	5 km	5 km
Junior Test	J2 - J4	16 km	7.5 km
Senior Test	All	16 km	9 km



MEDICAL



As per the Supplementary Regulations and General Competition Rules (GCR), you cannot refuse medical treatment, and doing so will result in your exclusion from the event.

CODE OF CONDUCT



All competitors, team members, and associates are required to adhere to the standards set forth in the Motorcycling Australia (MA) Code of Conduct. Competitors are responsible for the actions of their crew, which directly reflects on them.

Unacceptable behavior, including but not limited to abuse of officials, antisocial conduct, or public intoxication, will not be tolerated.

We uphold a ZERO TOLERANCE policy regarding abuse directed at officials and volunteers, both during the event and within the venue. Any violations will result in immediate removal and/or disciplinary action.

ANIMALS



No animals are permitted at the event, with the exception of registered guide dogs and assistance animals. We kindly ask that you inform your crew and supporters not to bring pets.

Individuals accompanying a registered guide dog or assistance animal must present the Race Secretary with documentation verifying that the animal is qualified, accredited, and serving its designated individual.

PIT BIKES, E-SCOOTERS, E-BIKES and BICYCLES



The use of pit bikes, e-scooters, e-bikes, bicycles, or any non-competition machines is strictly prohibited on the premises.

Exceptions are made solely for event officials and volunteers utilising these vehicles during the event. Non-compliance will result in penalties.



Camping is available from Friday, 29 May, in the designated camping area at a cost of \$20 per night per campsite. Fees are payable at sign-on. Competitors will receive a camping sticker which must be clearly displayed on the vehicle window and will be checked throughout the event.

- Blue Sticker: 1 Night Camping
- Yellow Sticker: 2 Nights Camping

Please be considerate of noise after 8:00pm, as competitors require adequate rest ahead of racing.

Campfires are permitted within the designated camping area only. Please bring your own firewood and ensure fires are managed safely at all times.

Toilet and shower facilities are available onsite. To obtain the best hot water from the showers, please turn taps fully on. We ask all attendees to respect these shared amenities and help keep them clean and tidy for all competitors and spectators.

Rubbish bins are provided throughout the venue; however, all attendees are requested to take major rubbish items with them when departing the venue. Please assist the club in keeping the grounds clean and tidy.

Kangaroos are abundant throughout the property. Please remain alert at all times for the safety of both riders and wildlife, particularly when riding around the venue.

The club canteen will operate daily, with breakfast available from approximately 7:00am on both Saturday and Sunday. Please support the club canteen during the event.

A coffee van will also be onsite throughout the weekend.

Vehicle movement within the pit area is prohibited until the event has concluded and an official "all clear" has been given.

All attendees are reminded that junior competitors and small children will be present throughout the pit area. Please exercise caution at all times.

The promoter reserves the right to prohibit any team or competitor from displaying branding that conflicts with event sponsors or contractual obligations.

If you have any questions or require further clarification concerning these final instructions, please do not hesitate to contact the race secretary of the event. They will be happy to assist with any inquiries you may have and ensure everything is in order for your participation.

Additionally, we kindly ask that you carefully review the riders' list to confirm that your nomination has been successfully processed. It is important to verify that all of your information is accurate and up to date, as any discrepancies could affect your entry or results.

Please take a moment to check and ensure everything is correct before the event begins.

THANK YOU TO OUR SPONSORS AND SUPPORTERS



RIVERLAND
JUNIOR MOTORCYCLE CLUB



YAMAHA

Revs Your Heart

PITMANS

EST 1945

ELF INDUSTRIES

rootboot®



SEEDING SYSTEMS



BARTSCH BUILDERS
YOUR LOCAL BUILDER

ROSSI



HILLS
Electrical Solutions

Redtech

commercial refrigeration



WONGANELLA

CONSTRUCTIONS

KESSNER

MOTORCYCLES

Manuel MotoSports

WSB DISTRIBUTORS
AGRICULTURAL & INDUSTRIAL MACHINERY

SOUTHERN STEEL SUPPLIES
THE SOUTH AUSTRALIAN STEEL COMPANY

RMC

M E D I A

RESTOKOTE

SOUTHERN WIRE
YOUR FENCING PARTNER
PH: 1800 627 722

SKDA®



Government of South Australia
Office for Recreation, Sport and Racing

